

the Great Mountain Bike Trail

● **Difficult**

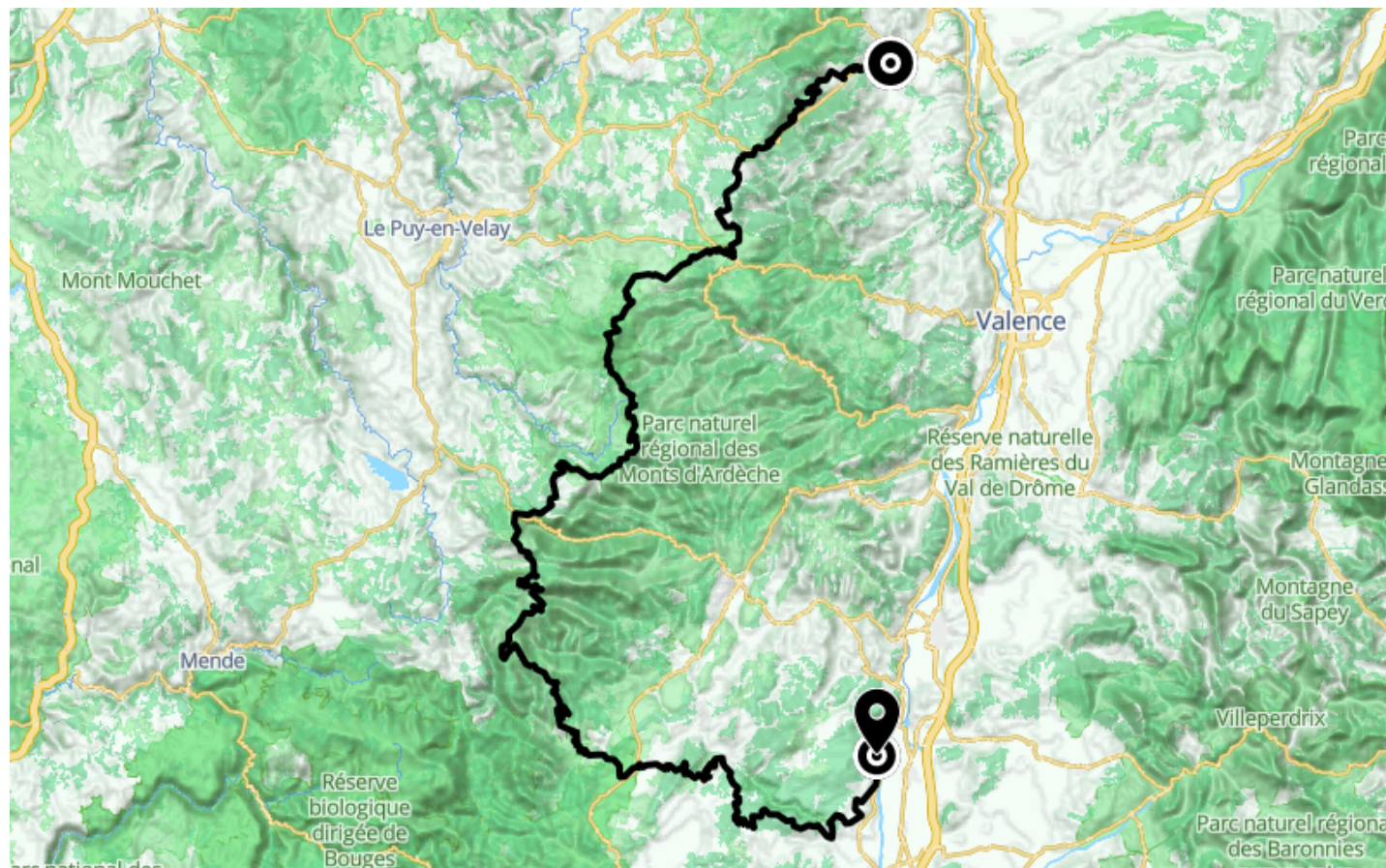
🚲 **Mountain bike**

🕒 **33 h 28 min**

↔️ **332 km**

📍 **Départ** Chemin Charles Gris
07100, Annonay

📍 **Arrivée** 1 Place du Champ de Mars
07700, Bourg-Saint-Andéol



Descriptif

Up there, on the borders of the Ardèche and Haute-Loire regions, the foothills of the Massif Central will be your starting point for this adventure on the GTA VTT. Then it's on to the Ardèche mountains and their trails. Today, it's seen as a place of authenticity and freedom. Further south, people are happy to claim that they belong to the Cévennes Ardèche. And last but not least, you'll cycle through the southern Ardèche, the most highly-rated and coveted of the Ardèche regions, so full of treasures.

Crossing the Parc naturel régional des Monts d'Ardèche, you'll set off for the Monts Mézenc and Gerbier de Jonc, the Tanargue massif, the Païolive wood and the Ardèche Gorges. You'll end up in the vineyards and orchards of the hillsides before reaching the banks of the Rhône.

313km in 7 stages in the heart of the Ardèche on the GTA VTT

Stage 1: Annonay - Devesset: 58.3km

Stage 2: Devesset - Les Estables: 47.5km

Stage 3: Les Estables - Lanarce: 52.6km

Stage 4: Lanarce - Montselgues: 39.5km

Stage 5: Montselgues - Les Vans: 34.3km

Stage 6: Les Vans - Vallon Pont d'Arc: 34.8km

Stage 7: Vallon Pont d'Arc - Bourg-Saint-Andéol: 51.4km

Note that there is a second start from Tournon-sur-Rhône to Devesset, a 105km variant in two stages:

Stage 1 variant: Tournon-sur-Rhône – Saint-Félicien: 54.8km

Stage 2 variant: Saint-Félicien – Devesset: 50.1km

Signposting and layout of the GTA VTT

The Grande Traversée de l'Ardèche VTT is signposted in the North > South direction.

Signposting: FFC mountain bike signposting, red directional arrow on white background.

The route is particularly suitable for mountain bikes or electrically-assisted mountain bikes.

It mostly follows long-distance footpaths (GR4 and GR7).

Terrain: Pebbles – Hard surface (tar, cement, flooring) – Earth

Transporting luggage, bikes and people on the GTA VTT

La Malle Postale accompanies you on the 7 stages from Annonay to Bourg-Saint-Andéol and can transport your luggage and mountain bikes between Annonay and Bourg-Saint-Andéol.

Trains and stations to reach the GTA VTT

- Saint-Etienne: TER 17 bus line Saint-Etienne-Annonay (40km) with free bike parking

- St-Vallier-sur-Rhône: nearest train station is Annonay (23km)

TER line Lyon / Avignon with free bike space

- Pierrelatte: nearest station to Bourg-Saint-Andéol (6 km)

TER line Lyon / Avignon with free bicycle parking.

Routes linked to the Grande Traversée de l'Ardèche VTT

- Via Fluvia (common section from Annonay to "Les Seux" – Boulieu-lès-Annonay)

- Dolce Via (connection to Saint-Agrève)

- ViaRhôna (connection to Bourg-Saint-Andéol)



Agence Développement Touristique de l'Ardèche

Pôle Bésignoles, 6 Rte des Mines, 07000 Privas

+33475640466

<https://www.ardeche-guide.com>



Retrouvez ce parcours et bien d'autres
sur l'application mobile Loopi – balades & GPS

