

# L'Ardéchoise : La Méridionale

● Difficult

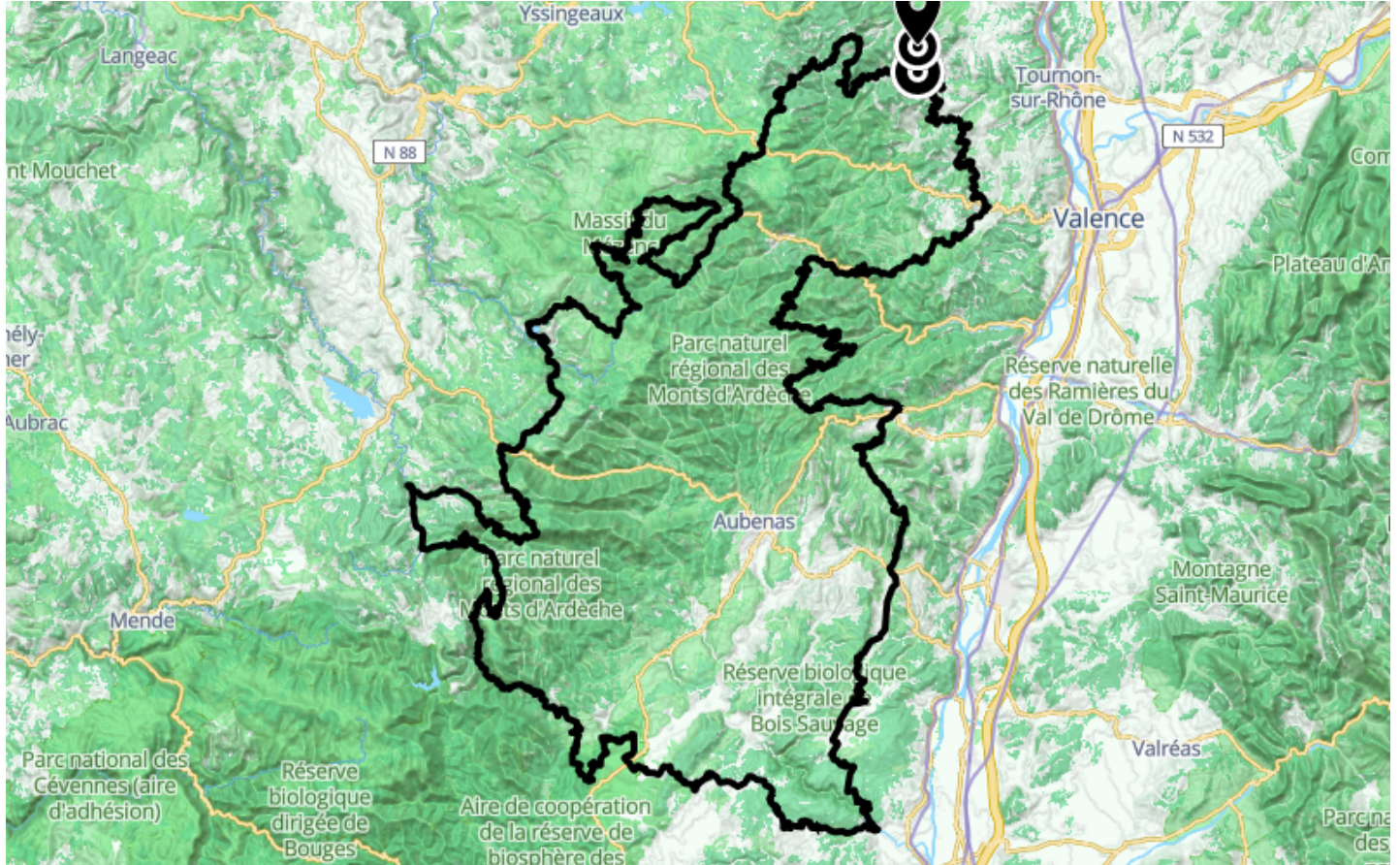
🚲 By bike

🕒 42 h 05 min

↔ 623 km

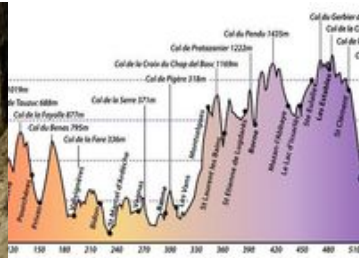
📍 **Départ** 75 Impasse du Gymnase  
07410, Saint-Félicien

📍 **Arrivée** 75 Impasse du Gymnase  
07410, Saint-Félicien



## Descriptif

The longest circuit of 'Sur les Routes de l'Ardéchoise'. It skirts the neighbouring counties of the Gard, the Lozère and the Haute-Loire to offer even more contrasting scenery and ...more hill valleys to traverse. The circuit is a mini replica of the Ardèche, revealing its volcanic, Mediterranean and Cévenol terrain. The landscape changes colour with the seasons and you'll discover all the iconic products of the Ardèche - chestnuts, wines, lavender, fruit, farm cheese and hams. And you'll receive a warm welcome in the villages, each one full of traditional charm as expected from villages designated as a 'village de caractère'.



**Agence Développement Touristique de l'Ardèche**

Pôle Bésignoles, 6 Rte des Mines, 07000 Privas

+33475640466

<https://www.ardeche-guide.com>



Retrouvez ce parcours et bien d'autres  
sur l'application mobile **Loopi - balades & GPS**

